

Revised August 2015
Massachusetts Music Educators Association
Cello Scales

♩ = 80

The sheet contains 12 major scales for cello, each written in bass clef and 4/4 time. The scales are: C Major, F Major, B♭ Major, E♭ Major, A♭ Major, D♭ Major, F♯ Major, B Major, E Major, A Major, D Major, and G Major. Each scale is presented in a single staff with a tempo marking of ♩ = 80. The scales are written in a way that includes triplet markings (indicated by a '3' over a group of notes) to facilitate practice. The scales are arranged in a sequence that covers all 12 major keys.

C Major

F Major

B♭ Major

E♭ Major

A♭ Major

D♭ Major

F♯ Major

B Major

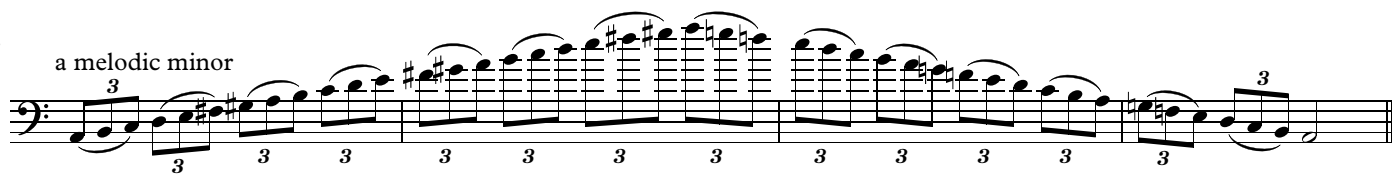
E Major

A Major

D Major

G Major

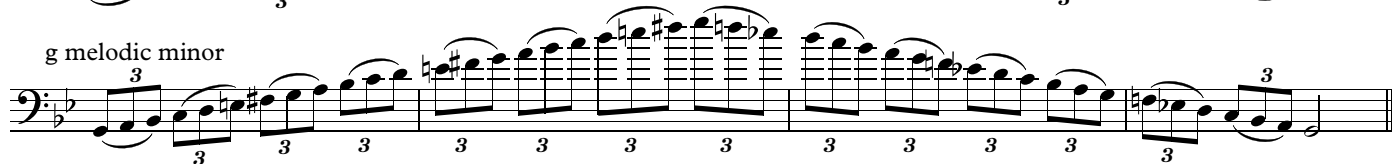
a melodic minor



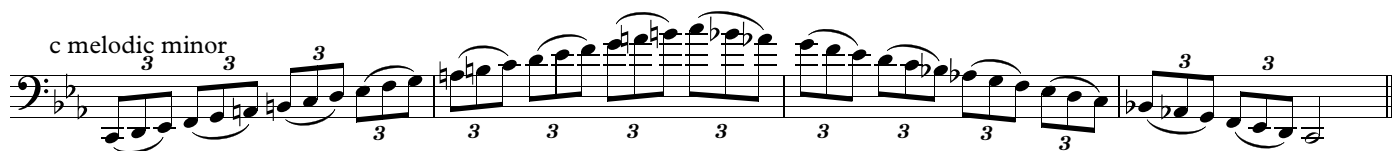
d melodic minor



g melodic minor



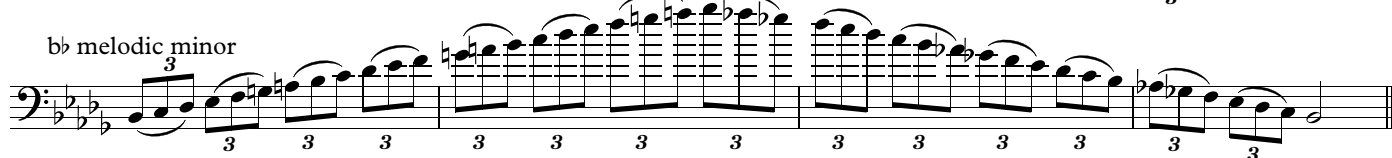
c melodic minor



f melodic minor



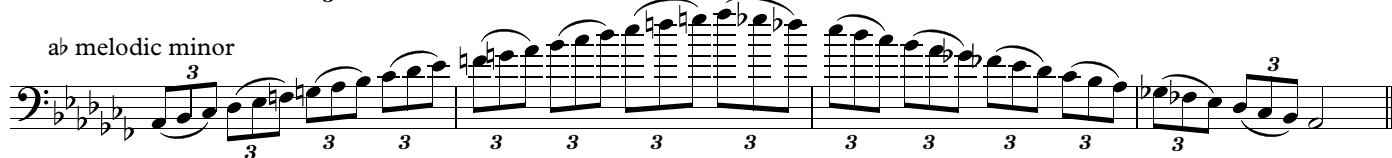
bb melodic minor



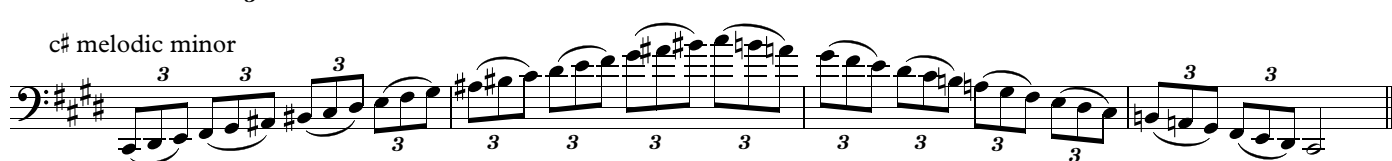
eb melodic minor



ab melodic minor



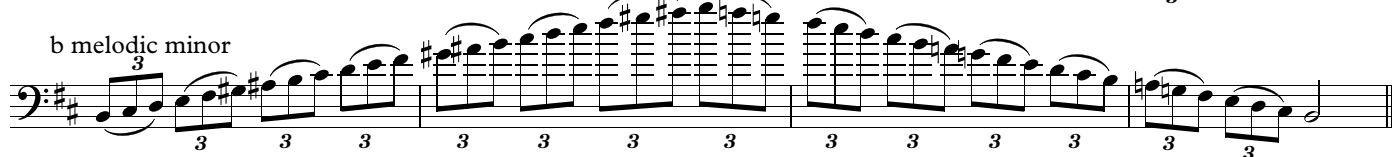
c# melodic minor



f# melodic minor



b melodic minor



e melodic minor

